



**ACADÉMIE  
DE NANTES**

*Liberté  
Égalité  
Fraternité*

## **SESSION 2022**

**BACCALAURÉAT PROFESSIONNEL  
ÉPREUVE ORALE SPÉCIFIQUE « SECTION EUROPÉENNE »  
SPÉCIALITÉ TECHNICIEN D'ÉTUDE EN BATIMENT  
LANGUE : ANGLAIS**

### **SUJET N°2**

**Durée de l'épreuve : 40 minutes**

- Préparation	- 20 minutes
- Présentation de la situation	- 10 minutes
- Entretien sur les activités et travaux effectués dans la discipline non linguistique	- 10 minutes

## SITUATION

You are a trainee working in **an architect studio in New Orleans (USA).**

You are specialized in the new laws for disabled people in building.

Your studio participates to an architectural project for building the new pavilions of The World War 2 Historical Museum in New Orleans. A lot of old people with different handicaps visit this museum.



**Explain to the museum what the new laws and building regulations concerning disabled people are.**

## DOCUMENTS

- **N°1 : THE NATIONAL WORLD WAR TWO MUSEUM IN NEW ORLEANS**
- **N°2 : ADA STANDARTS (AMERICA WITH DISABILITIES ACT)**
- **N°3 : BUILDING REGULATIONS**

## DOCUMENT 1 : THE NATIONAL WORLD WAR TWO MUSEUM IN NEW ORLEANS.

### *The History of the Museum*

The National WWII Museum started as the vision of Stephen E. Ambrose. He dreamt of a museum that reflected his deep regard for American soldiers, the sacrifices they endured to achieve victory.

The National D-Day Museum opened on June 6, 2000.

On September 25, 2003, the United States Congress awarded the Museum the designation of “America’s National World War II Museum.”

The museum has five pavilions to house the different exhibits, on-site restoration work and a dinner theatre, restaurants and shops.

Two more pavilions are in the works (2016) to provide further educational exhibits. They must be built according new building regulations.



Source : <http://pointsandfigures.com> 10-2016

## DOCUMENT 2 : ADA STANDARTS (AMERICA WITH DISABILITIES ACT)



Parking and Passenger Loading Zones



Dangerous Objects



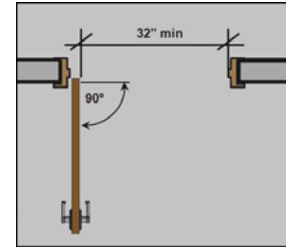
Wheelchair Maneuvering



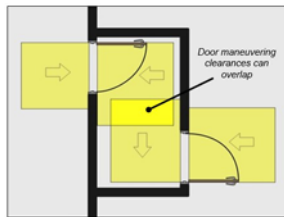
Maneuvering at Doors



Accessible Toilet Rooms



Door Width



Manoeuvring Clearances



*Source : US Access Board*

## DOCUMENT 3 : BUILDING REGULATIONS

### Access to Buildings by Disabled People

Everyone providing a service, from the dentist to the library, now has to consider making them more user friendly for disabled people.

### Building Regulation Guide

New Building Regulations have recently changed.

Builders have to make buildings accessible to people with a disability.

The Building Regulations include :

- disabled toilet facilities on each floor
- ramped access
- large corridors
- a lift
- clear signs

Access for people with a disability covers a wide range of disabilities such as:

- sight
- hearing
- walking problems
- wheelchairs
- mental diseases ....

If you require more information about access to buildings by disabled people, contact the Building Control Team.

*Source : [buildingcontrol@torfaen.gov.uk](mailto:buildingcontrol@torfaen.gov.uk)*