

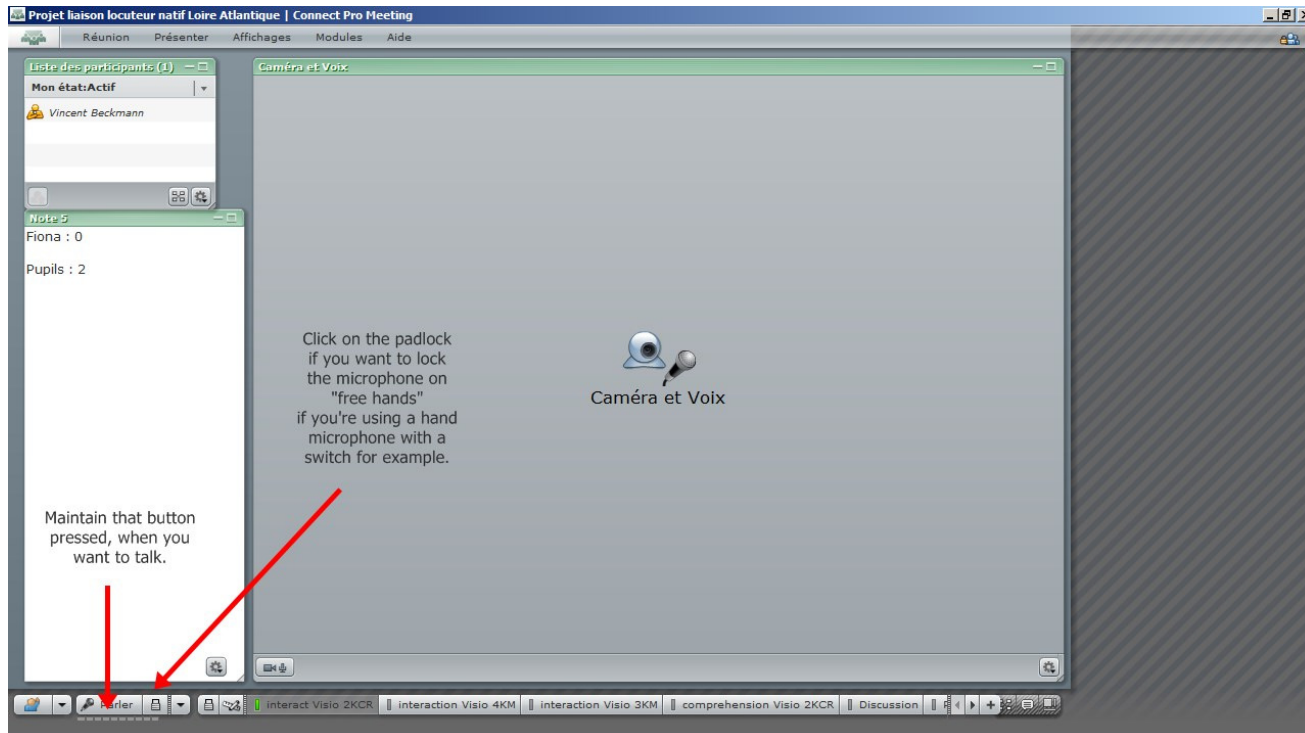
# ADOBE CONNECT virtual classrooms : general aspects

## 1° What you see is what they see!

All people who are connected share the same screen. All the changes you make are being seen by everyone at once.

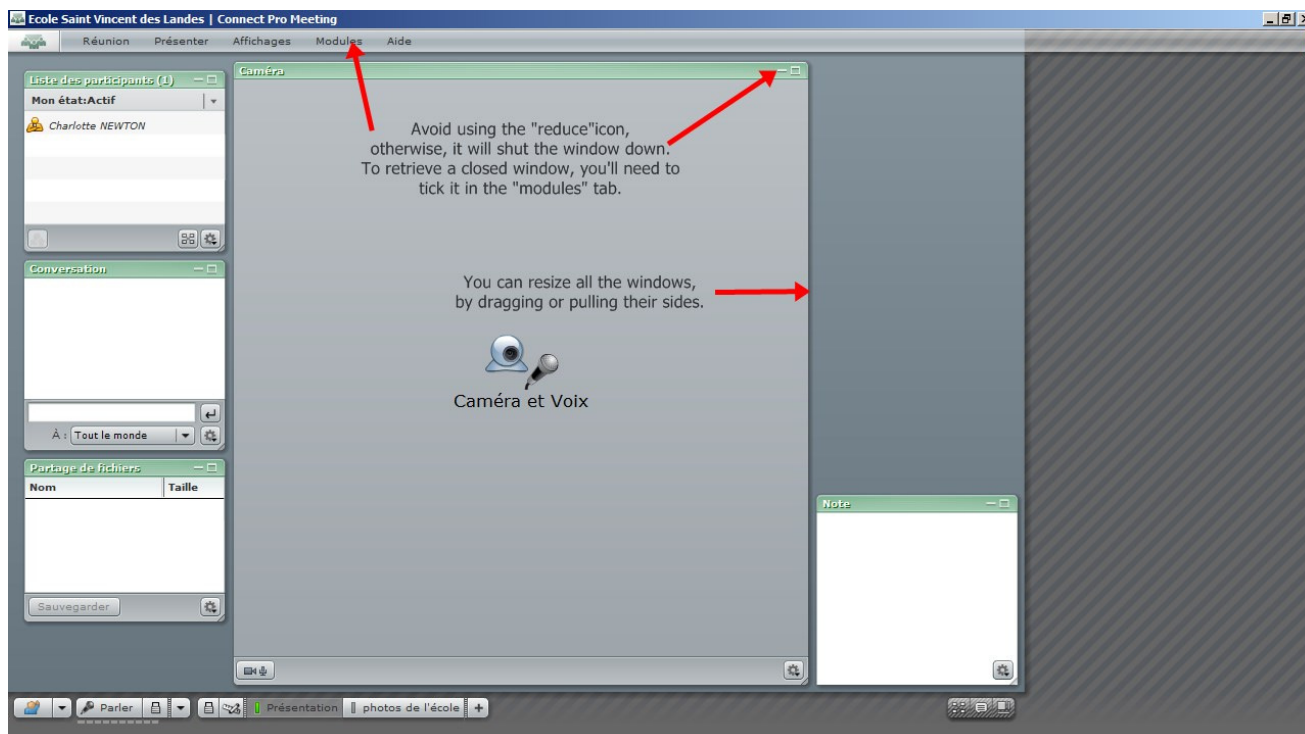
## 2° The “parler” button :

When you want to talk, you need to press the “parler” button, and keep it pressed until you have finished.



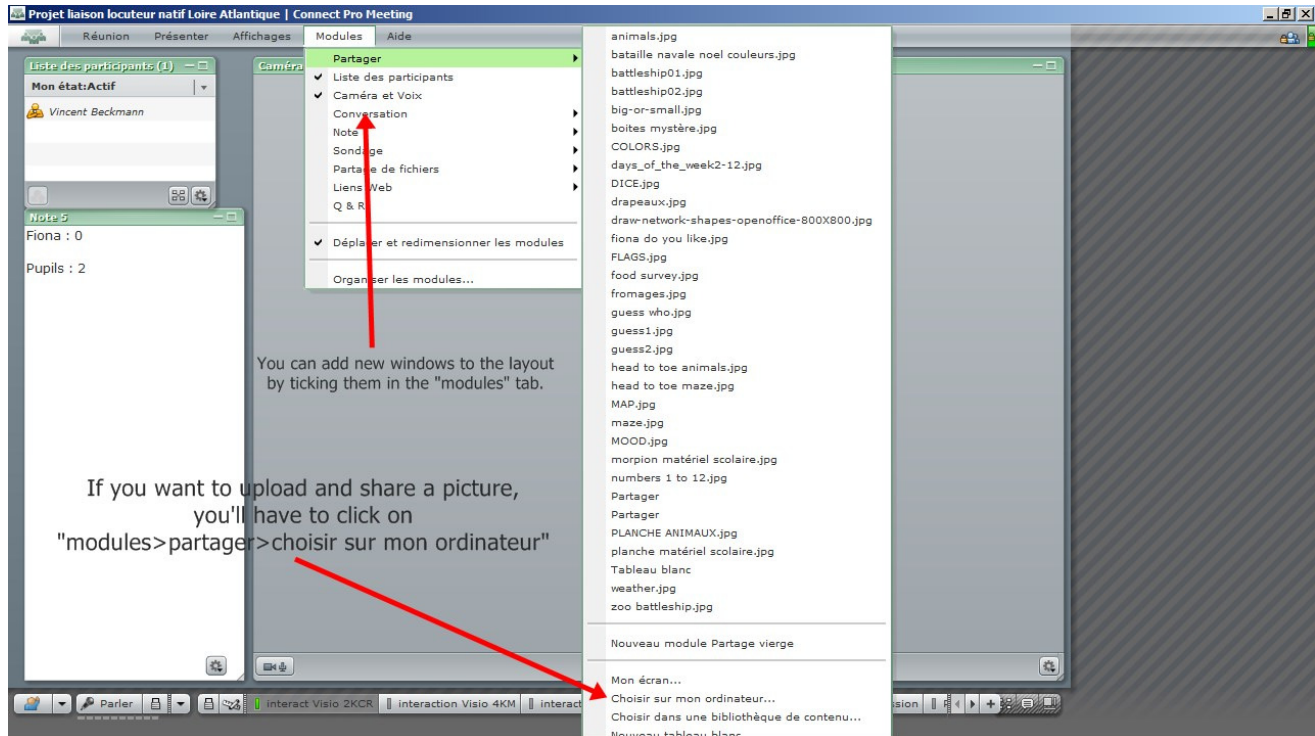
## 3° Resizing windows :

All windows can be resized, shut down or moved.



#### 4° Adding new windows to the layout :

All windows can be resized, shut down or moved.



#### 5° Layouts :

In adobe connect, it is possible to have many layouts ready for use, and to switch from one to another. The changes you make in a layout don't apply to other layouts.

